



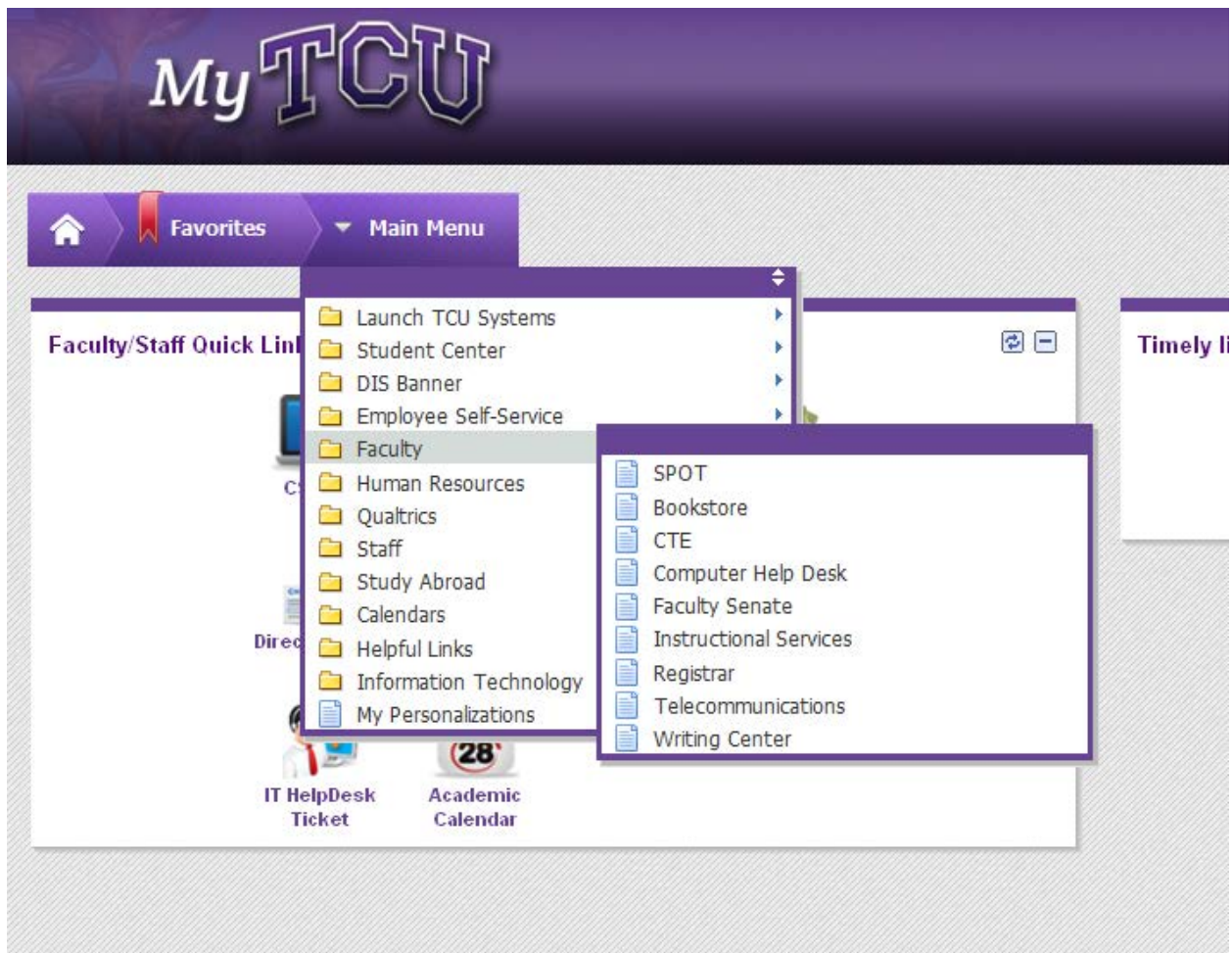
Login Instructions into SmartEvals! – the eSPOT system

There are two ways to log into SmartEvals!.

Login Method 1

Log into <https://my.tcu.edu> using your TCU username and password.

From the **Main Menu** drop-down box >> select **Faculty** or **Student Center** folder >> select **SPOT**.



Login Method 2

eSPOT may be accessed by clicking on the time-sensitive link found in your system generated e-mail. The link is only active for about two weeks from the date that the e-mail was sent. **The e-mail should not be forwarded since it contains a direct link to your personal eSPOT account.**